



*“The Color of Diesel is **GREEN**”*

AACC Energy Conference
January 28, 2010

Emissions Technology, Inc. (ETI)

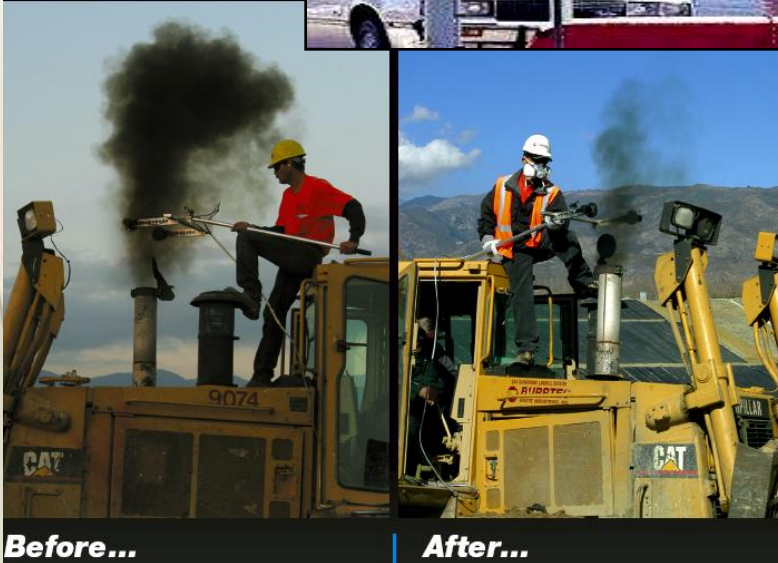
- **ETI commercially operating manufacturing company**
- **Dramatically improves combustion efficiency in diesel engines**
- **Significantly lower emissions and improved fuel economy**
- **Excellent End-User Return on Investment**
- **North American Market: Over 6 million off-road diesel engines**



The Problem for Diesel Equipment Operators



- Operating Costs
 - Diesel fuel prices on the rise
 - Remember \$150/bbl Crude?
- Operating Ability
 - National and State legislation
 - Clean up or Shut Down



The Solution

ETI's Patented Combustion Catalyst System



- Delivers aerosol platinum-based catalyst into the air intake
- Catalyst enhances combustion reaction for more complete burn
- Fuel consumption and emissions simultaneously reduced

CCS Performance Results*

(Typical Range)

- **10% - 20% Reduction in Fuel Consumption**
- **40% - 70% Reduction in Diesel Particulate Matter**
- **30% - 50% Reduction in Hydrocarbons**
- **10% - 40% Reduction in CO**
- **15% - 20% Reduction in NOx**

***Sources of Data:**

- **Average end-user results on actual operating equipment in most off-road market segments**
- **Holt Engine Test Labs – San Antonio, TX**
- **Olson Eco-Logic Engine Test Labs – Fullerton, CA**



Performance in Our Market Segments

Oil & Gas / Power Generation % Fuel Savings

Cummins K50	12.3
Genset Cat 3512	15.0
Genset Cat 3412	14.4
Pump P450	18.1
Genset Cat 3412	28.0
Genset Cat 4312 & 3512	18.0
Drilling Cat 3406	23.0
Pump Cat 3116	19.9
Drilling Cat C15	17.0
Tub Grinder Cummins QST30	29.0
Woodchipper Cat 3412	25.0
Drilling Cat C15E	29.0

Average 20.7

Construction/Agriculture

% Fuel Savings

Scraper cat 651B	9.2
Scraper Cat 613C	25.0
Cat 140H	20.1
Loader John Deere 624C	8.0
Loader Cat 966C	8.0
Tractor Cummins 400	10.6

Average 13.5

Marine (Coastal)

% Fuel Savings

Ferry Genset NTA 855G2	14.0
Fishing Boat Cat D353	25.0
Speed Boat DD/MTU 8V	18.5

Average 19.2

Mining (Surface)

% Fuel Savings

Back Hoe Cat 385BI	19.0
Loader 988 H	25.0
Dozer Cat D11R	20.0

Average 21.3



Partial List Current Customers

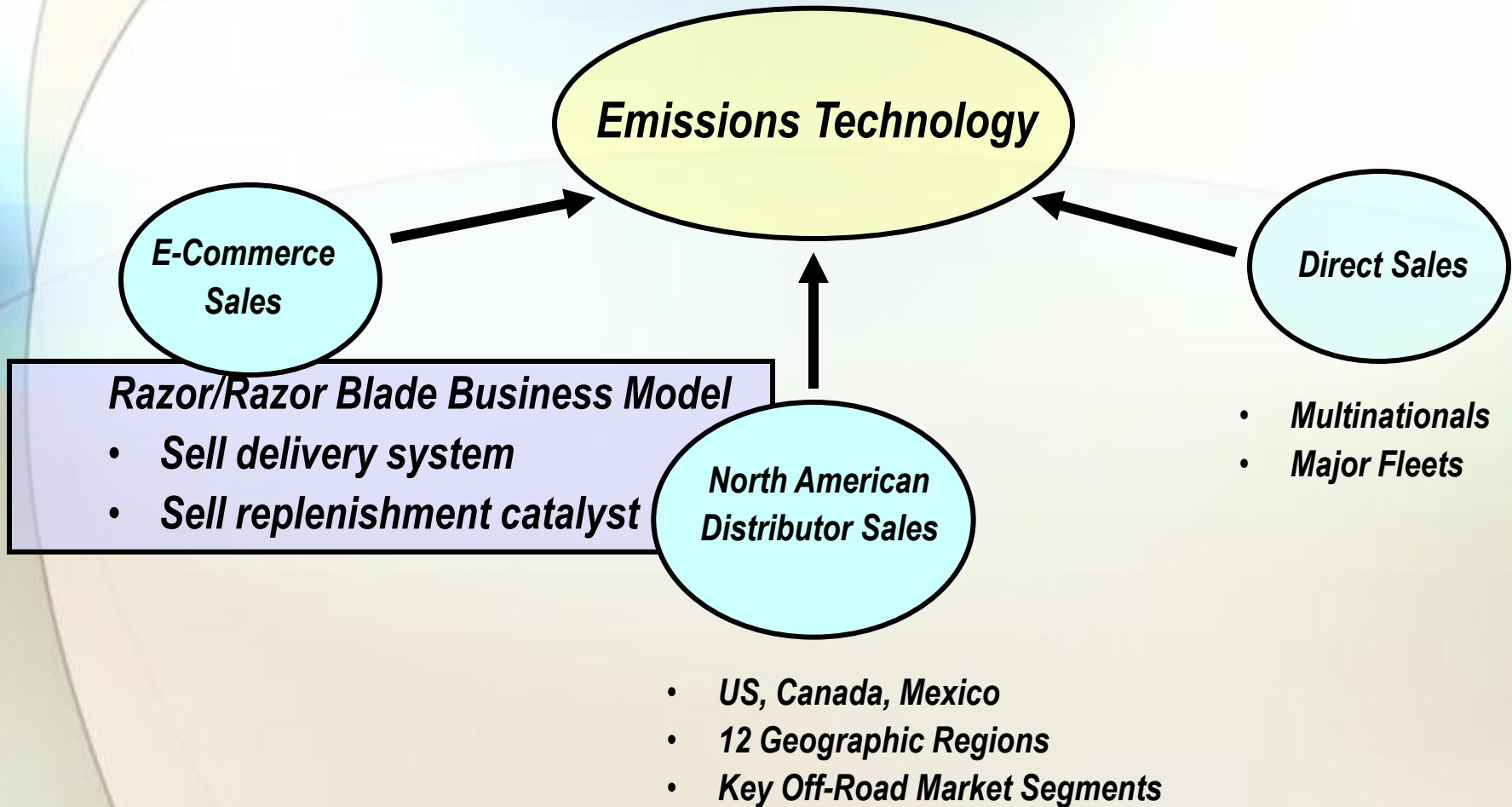
- **Nevada Ready Mix: Concrete and Aggregate**
- **Rio Tinto: Mining**
- **ECCO Equipment Corporation: Construction**
- **APAC Construction:
Transportation/Construction**
- **Aggregate Industries: Construction**
- **Pace Construction: Asphalt**
- **Rinker: Construction**

Value Proposition

- **More effective in reducing fuel consumption**
- **Less expensive to install and maintain**
- **Works synergistically with exhaust filters**

	Fuel Additives	Exhaust Filters	Emissions Technology
Unit Cost	Low	Very High	Low
Maintenance Costs	Low	Very High	Low
Fuel Savings	Unknown	Detrimental	Very Good
PM/HC Emissions Reduction	Moderate	Good to Very Good	Good

Emissions Technology Sales Model



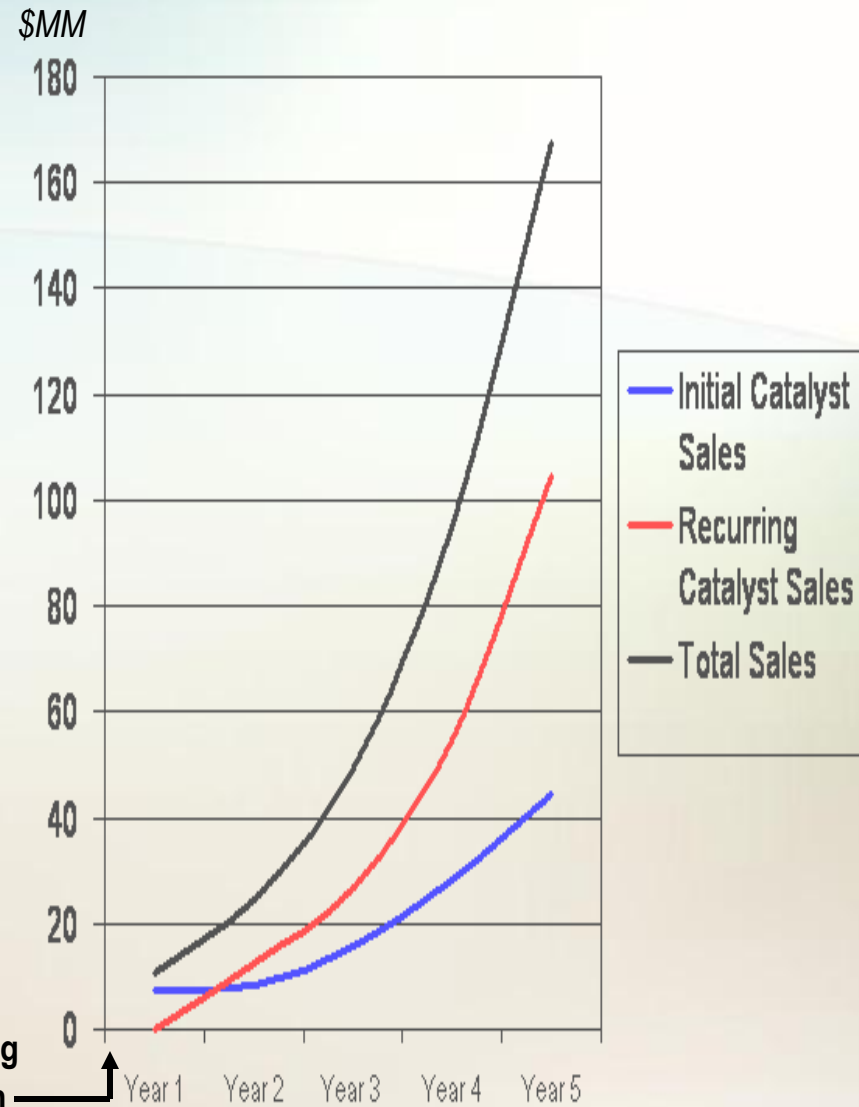
Current Pricing and Sales Model

•Products Sold

•CCS Units	MSRP
•DC - 103	\$1149
•DC - 203	\$1320
•Catalyst per Bottle	
•SD – Std. Duty	\$199
•HD – Heavy Duty	\$299
•XD – Extra Heavy Duty	\$399

•Recurring Catalyst Model

- One CCS installation generates 6 to 12 bottles of catalyst sales per year
- Revenue from recurring catalyst sales is the dominate source of income



Why ETI Will Win

- Proven technology
- Manufacturing ready
- Addresses major customer concerns
- Market open to ETI products
- Ability to touch large end-users

What ETI Needs

- Intro to Dealers/End-Users
- \$2 MM Equity Raise

