





Coal Seam Gas (CSG) and Liquefied Natural Gas (LNG) Queensland, Australia

Mr Chris Rodwell
Trade and Investment Commissioner
Queensland Government, Australia

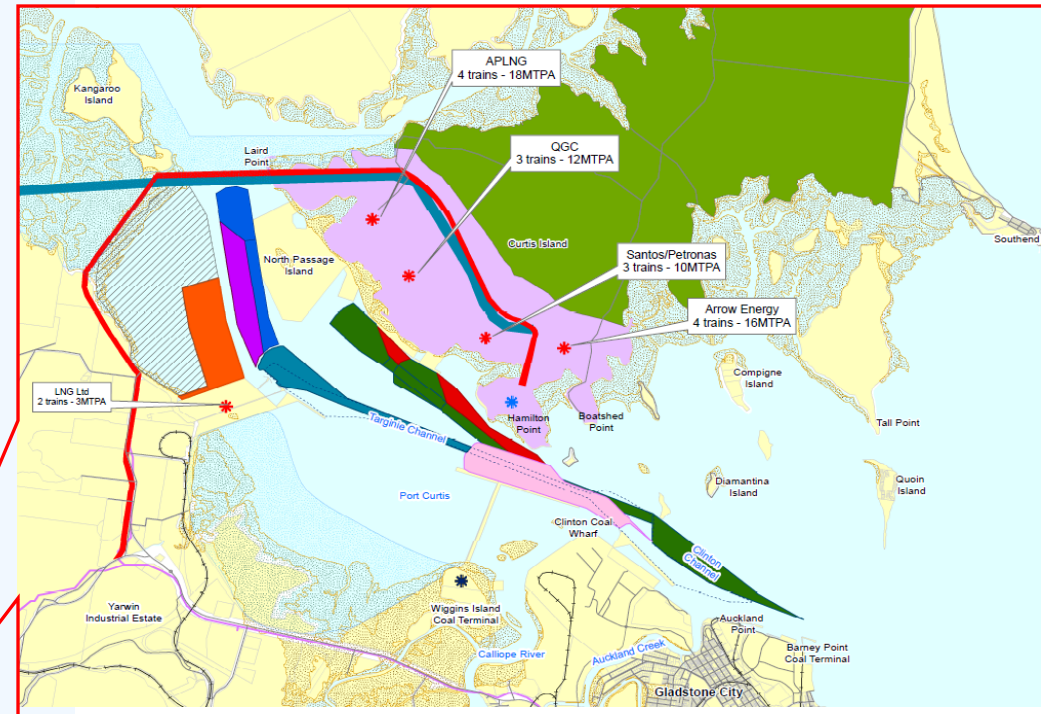


- **Country** – Australia
- **Population** - 4.56 million (20.2% of Australia's total)
- **GSP (Gross State Product)** – AU\$258 billion
- **Capital City** – Brisbane: 2 million residents
- **Land Mass**- 1.734 million square kilometres
- **Coastline** – 6,973 kilometres
- **Currency** - Australian dollar
AU\$1 = US\$1.029 (Oanda, 6 Jan 2012)
- **Time zone** – GMT +10:00 (16 hours ahead of Houston)

- LNG is set to become Queensland's second largest export industry behind coal.
- By 2016, Queensland's LNG exports are estimated to **exceed \$17 billion**.
- Queensland has 95 per cent of the CSG reserves identified in Australia.
- LNG projects in QLD have potential to **generate over 50 Mtpa of exports**.
- Potential for **18,000 direct and indirect jobs** to be created by the CSG/LNG sector.
- Port of Gladstone will become one of the **world's major LNG export hubs**.

Project	Partners	Project Details	LNG Production	Est. Capex (as at 2011) AUD\$	Offtake customers
QCLNG 	BG Group 100%	To extract and pipe gas from Surat Basin to a new LNG plant on Curtis Island (Gladstone) <ul style="list-style-type: none"> Gas field production wells 540km 42 inch pipeline from production wells to LNG plant Marine stretch of pipeline to be co-located in a seabed trench with APLNG pipeline Using own LNG tankers for delivery 	<ul style="list-style-type: none"> Initial production 8.5 mtpa (2 trains) Full capacity potential 12 mtpa (3 trains) 	\$15 billion	<ul style="list-style-type: none"> Quintero LNG, Chile EMA, Singapore CNOOC, China Tokyo Gas
APLNG 	Origin 37.5% ConocoPhillips 37.5% Sinopec 25%	To extract and pipe gas from Surat & Bowen Basins to a new LNG plant on Curtis Island (Gladstone) <ul style="list-style-type: none"> Gas field production wells (managed by Origin) 520km 42 inch pipeline from production wells to LNG plant Marine stretch of pipeline to be co-located in a seabed trench with QCLNG pipeline 	<ul style="list-style-type: none"> Initial production 4 mtpa (1 train) Full capacity potential 18 mtpa (4 trains) 	\$20 billion*	<ul style="list-style-type: none"> Sinopec Kansai Electric Power
GLNG 	Santos 30% Petronas 27.5% Total 27.5% Kogas 15%	To extract and pipe gas from Surat & Bowen Basins to a new LNG plant on Curtis Island (Gladstone) <ul style="list-style-type: none"> Gas field production wells (managed by Santos) 420 km 42 inch pipeline from production wells to LNG Plant 	<ul style="list-style-type: none"> Initial production 7.8mtpa (2 trains) Full capacity potential 10 mtpa (3 trains) 	\$16.2 billion*	<ul style="list-style-type: none"> Petronas Total KOGAS
Arrow LNG 	Shell PetroChina	To extract and pipe gas from Surat & Bowen Basins to a new LNG plant on Curtis Island (Gladstone) <ul style="list-style-type: none"> Gas field production wells 467km pipeline from Surat Basin wells and 530km pipeline from Bowen Basin wells to LNG plant Marine section of pipeline will include a tunnel encasing the pipe 	<ul style="list-style-type: none"> Initial production 9 mtpa (2 trains) Full capacity potential 16 mtpa (4 trains) 	\$36 billion*	<ul style="list-style-type: none"> Shell PetroChina

QLD CSG/LNG Project Locations



For current interactive resource and tenure maps (updated daily), visit www.dme.qld.gov.au

LNG Projects in the South East Pacific Region

Trade & Investment Queensland
Australia



- Conoco Phillips
- Bechtel
- Hatch
- GE
- Talisman Energy
- Enerflex
- Savanna
- Cameron International
- Halliburton
- WorleyParsons
- Wood group



Trade and Investment Queensland provides a range of services to make the decision and relocation/expansion processes as simple as possible.

- Providing comparative information on business costs, skills availability and other business investment opportunities in Queensland,
- Arranging site visits to explore investment opportunities,
- Facilitating introductions with local companies and service providers,
- Involving other government agencies to assist in the establishment of new projects,
- Connecting investors with Queensland's advanced tertiary sector and encouraging the development of skills and capabilities needed by investors,

The climate's great for investment

take the next step

For further information on investment opportunities contact:

Chris Rodwell

Trade and Investment Commissioner

Queensland Government, Australia

Email: chris.rodwell@trade.qld.gov.au

